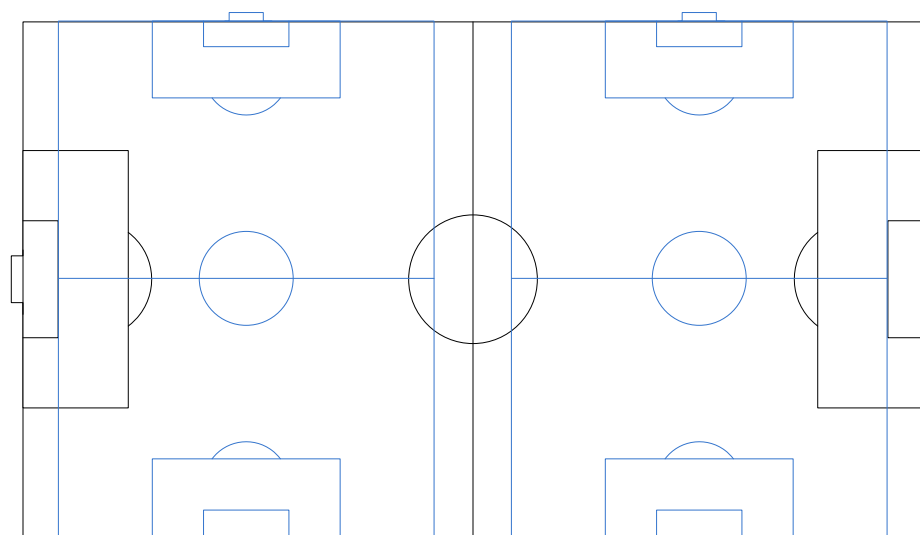
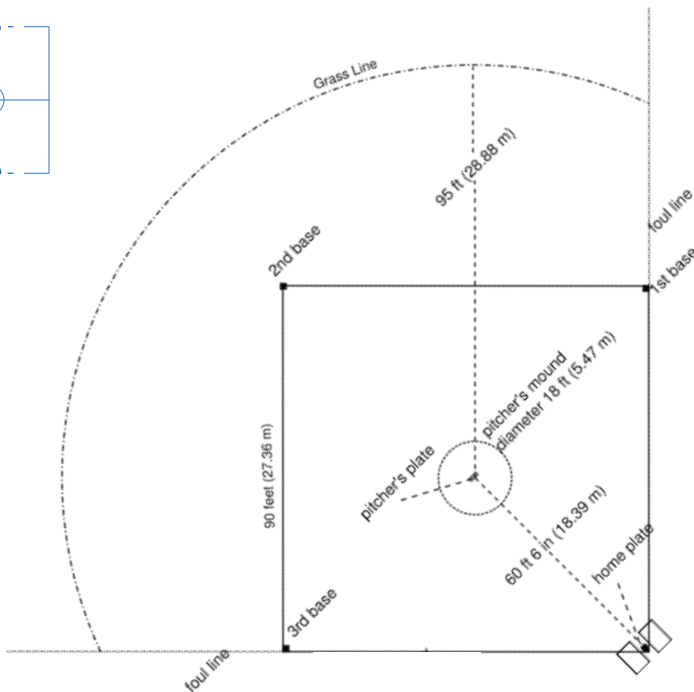
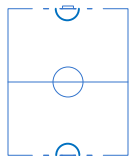
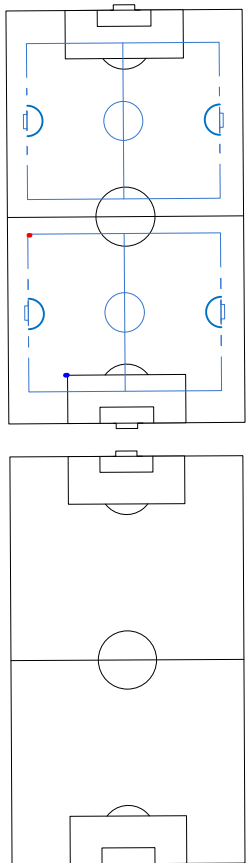


PITTSBORO ELEMENTARY FIELD LAYOUT

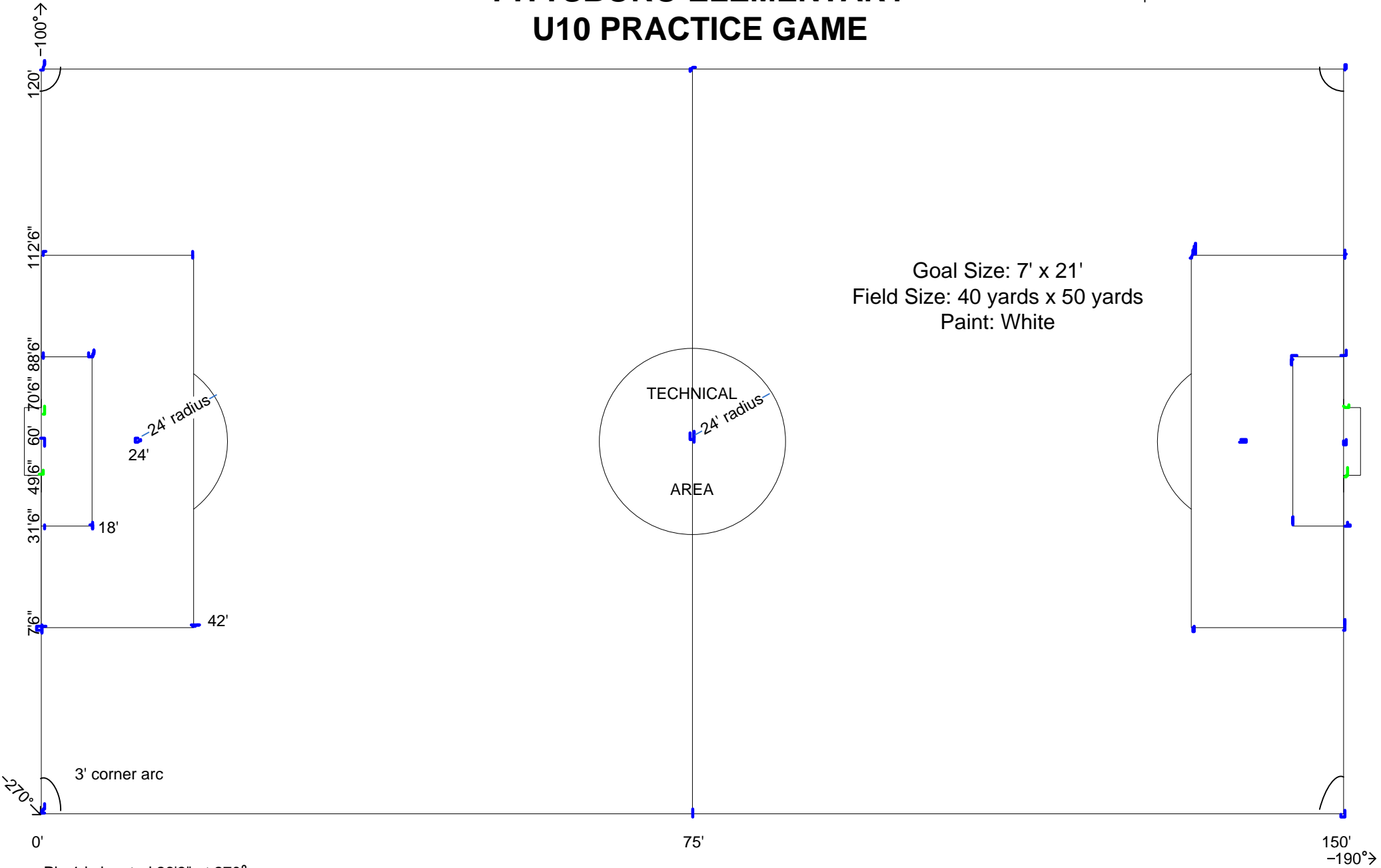


CSL
SHED

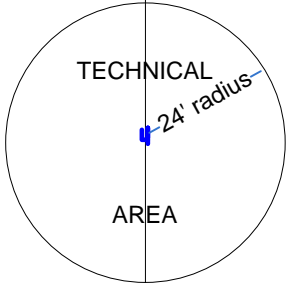
PITTSBORO ELEMENTARY SCHOOL

PITTSBORO ELEMENTARY U10 PRACTICE GAME

Maps are not to scale



Goal Size: 7' x 21'
Field Size: 40 yards x 50 yards
Paint: White



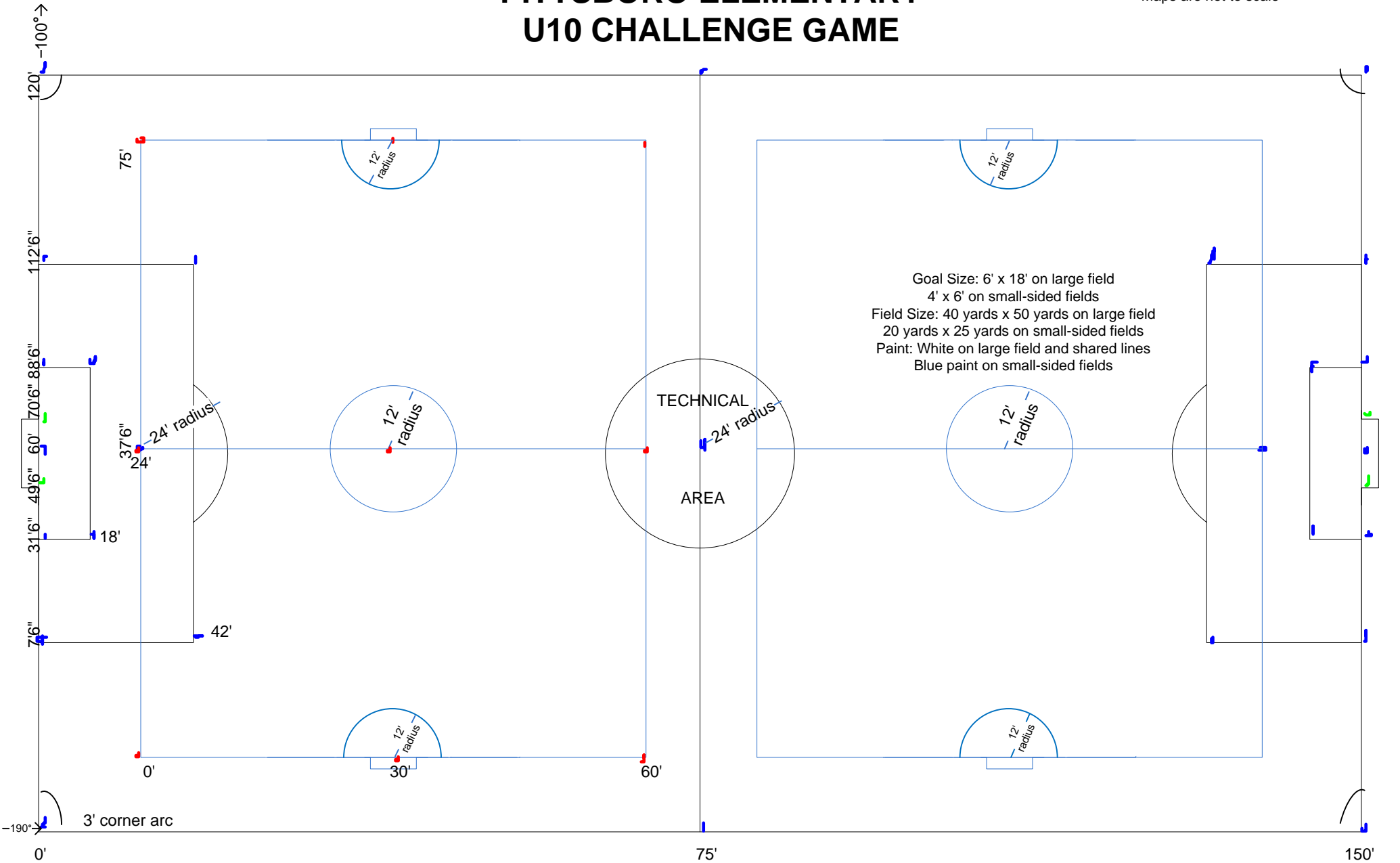
Pin 1 is located 26'3" at 270°
from the Southwest corner of
the shed



- Screwdriver (25 on large fields)
- Reference Point

PITTSBORO ELEMENTARY U10 CHALLENGE GAME

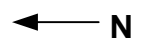
Maps are not to scale



Goal Size: 6' x 18' on large field
4' x 6' on small-sided fields
Field Size: 40 yards x 50 yards on large field
20 yards x 25 yards on small-sided fields
Paint: White on large field and shared lines
Blue paint on small-sided fields

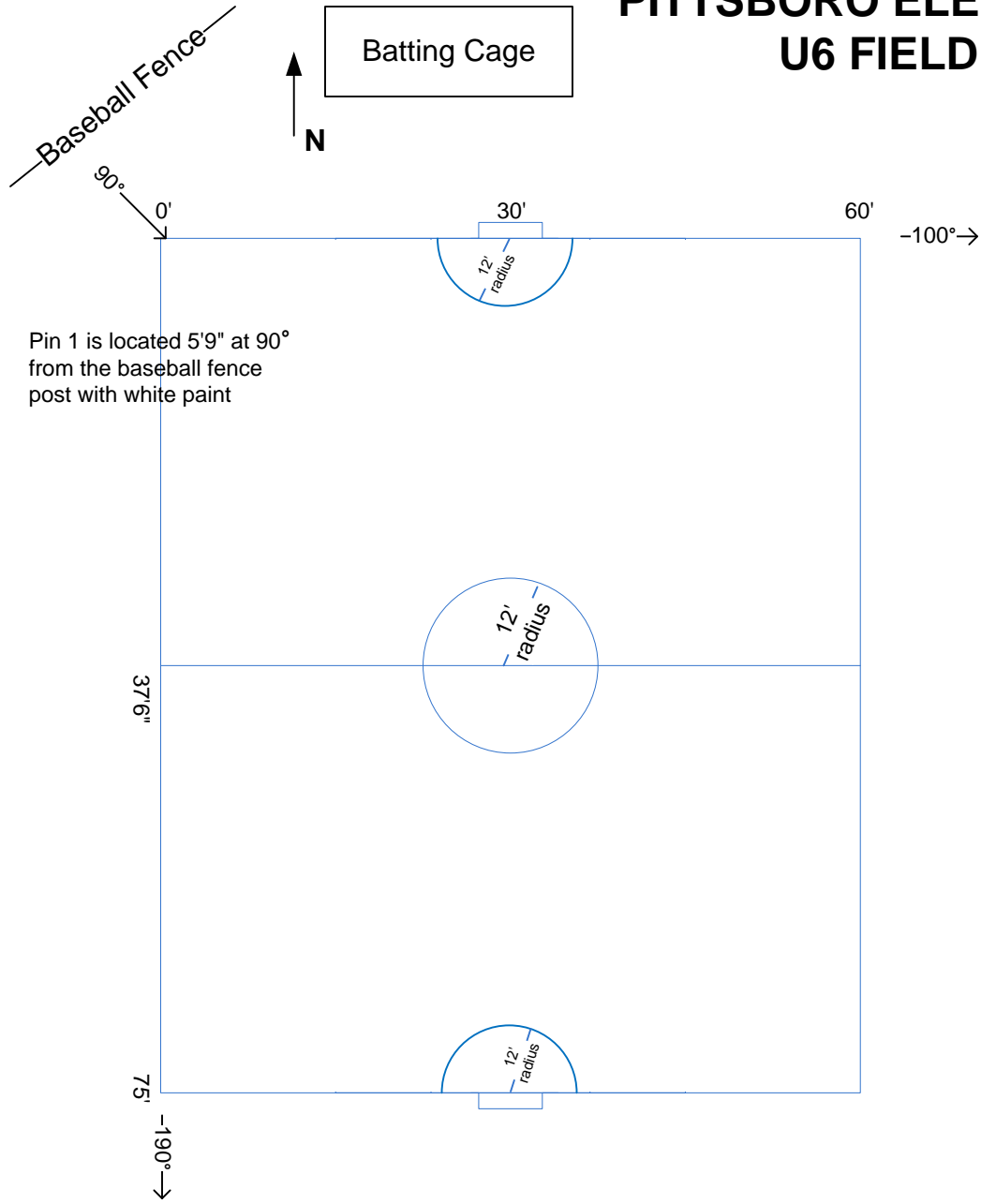
TECHNICAL
AREA

Pin 1 is located 24' at 190° from
the South corner of the U10
Practice Field



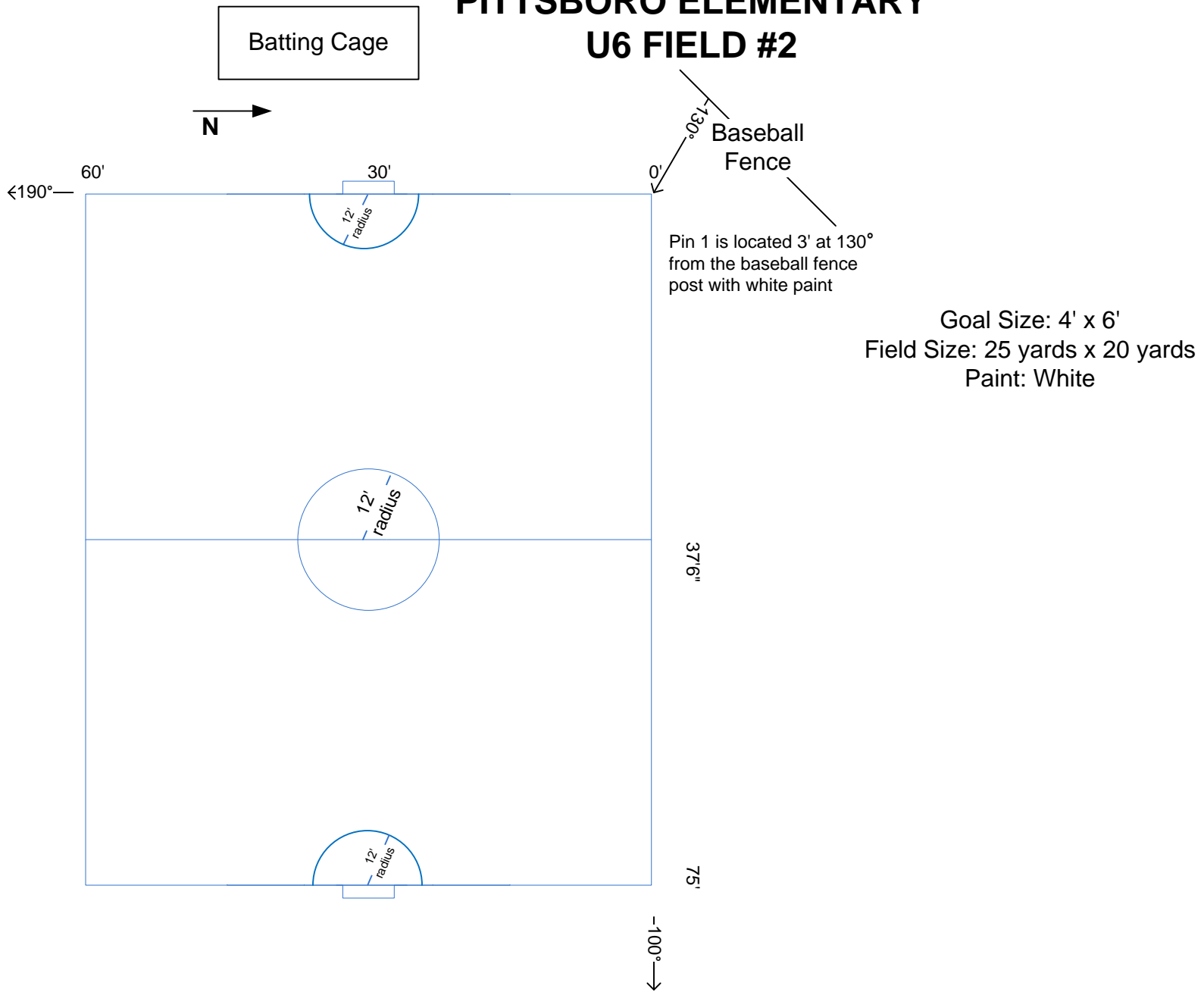
- Screwdriver (25 on large fields)
- Screwdriver (50 on small fields)
- Reference Point

PITTSBORO ELEMENTARY U6 FIELD #1



Goal Size: 4' x 6'
Field Size: 25 yards x 20 yards
Paint: White

PITTSBORO ELEMENTARY U6 FIELD #2



INITIAL PAINTING INSTRUCTIONS

1) Locate the pins using the metal detector.

Pull the tape measure from the corner closest to the concession stand along the sideline to the opposite corner.

Locate all the pins along the sideline using the metal detector.

Mark the pins for the small fields in blue and the large field in white. Repeat this on each touch line and sideline.

Pull the tape measure from one touch line to the other to locate the pins within the field. This will need to be completed for each of the three fields being painted. Once all the pins are located, use the string and screwdrivers to layout the fields.

2) Paint the large field

For the large (white) field, begin with the exterior. Place screwdrivers on each corner and at the midfield pin pulling the line tight between each point. Once the exterior of the field has the string pulled, pull it back to the beginning of the keeper box on the touch line. Move around the keeper box to the other touch line. Next pull the string to the penalty box along the touch line. Once you complete the penalty box, pull the line to the screwdriver located at one of the midfield pins. Cross the field to the other sideline midfield pin. Pull to the penalty box on the touchline of the other end of the field.

Complete the penalty box and then the keeper box. Once the lines are pulled, you can now paint the field with white paint. To use the paint machine, shake the paint can well until the ball inside freely moved. Place the paint can in the paint machine by sliding it into position with the spray nozzle pointed from side to side (not front to back). Squeeze the handle on the paint machine to spray the paint. There should be a 4-5" thick line. If there is a thin line, adjust the can by turning it 90° and try again. After painting the lines, roll the string back up in the opposite direction to avoid tangling the line. Arcs and circles will be discussed later.

3) Paint the small fields

Using similar steps as noted in Step 2 above, pull the string for the smaller fields. Both fields can be laid out using the large spool of string. Layout one field and then the next one. This will help avoid tangling the string when finishing up. When painting the blue lines, there are several lines in common with the white. Do not paint over the white lines. Leave the common lines white.

4) Arcs and circles

Using the tape measure and a screwdriver, paint the arcs and circles by locating the center pin and pulling the tape measure from line to line or in a circle with the paint can at the distance required.